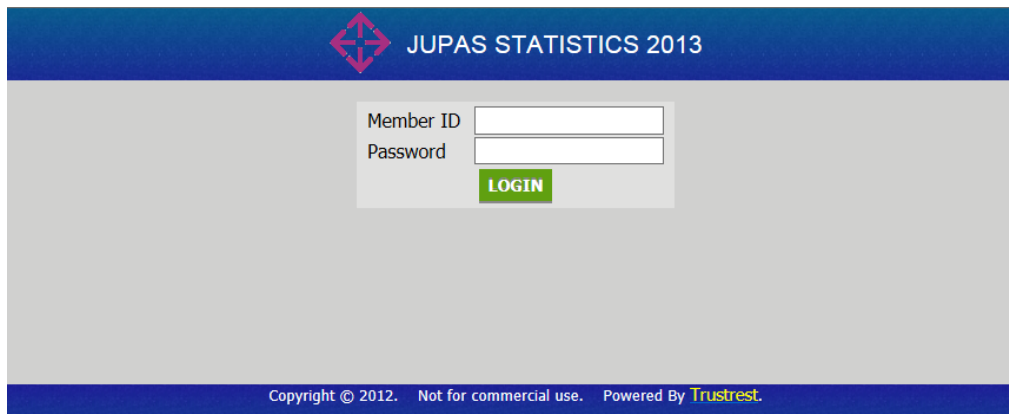


Guideline for manual data entry of JUPAS STATISTICS 2014 platform

Input period: **23 Sep 2014 – 31 Oct 2014**

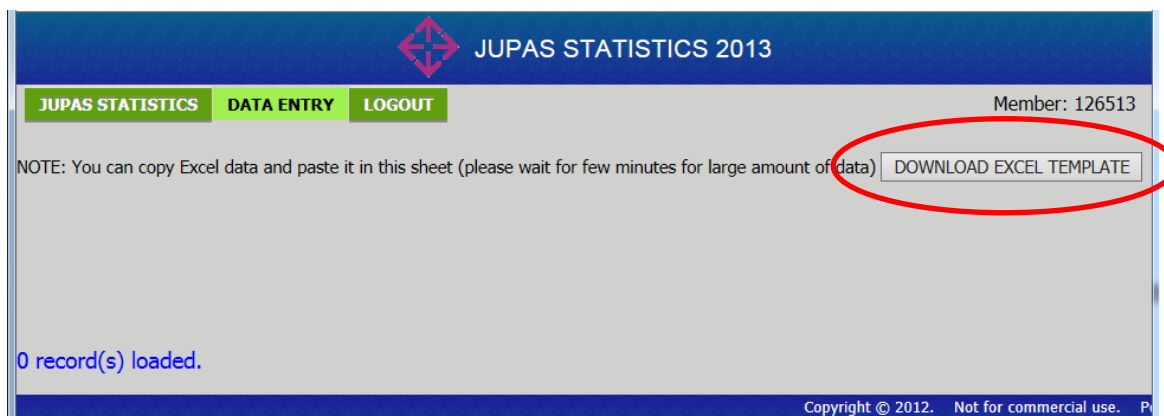
1. Go to http://transition.hkacmgm.org/jupas_stats/index.php.



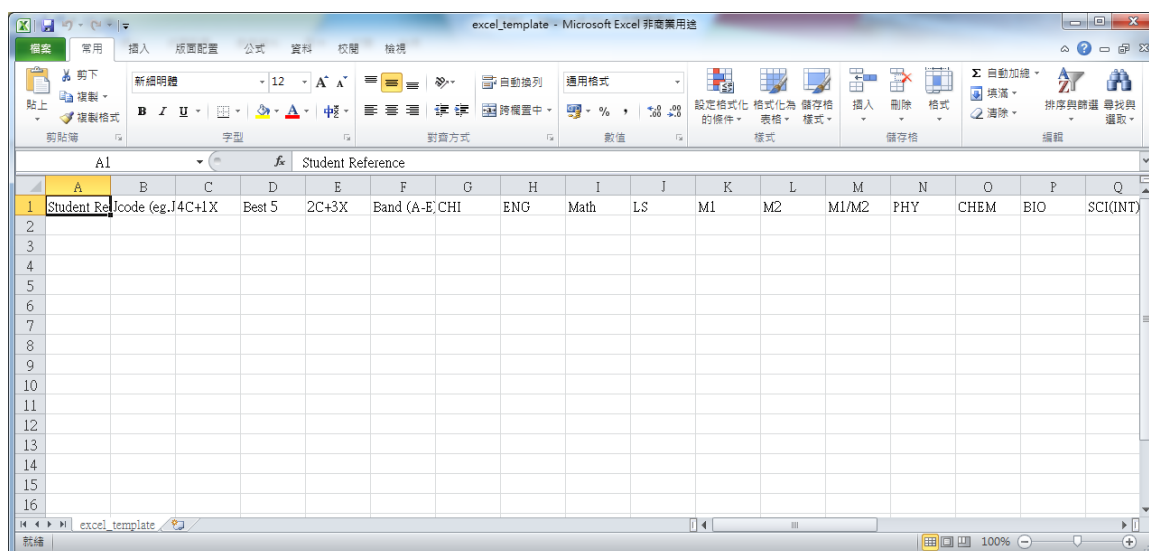
2. Input the 'Member ID' and 'Password' given to the corresponding boxes, and then press 'LOGIN'.
You should use the **NEW 'Member ID' and 'Password'** given this year.
3. Read the declaration and click 'I agree', and then click the green box 'DATA ENTRY'.



4. Enter the email address of the teacher-in-charge in the provided space.
5. You are strongly recommended to download the excel template by clicking the box 'DOWNLOAD EXCEL TEMPLATE', so that you can input the data using the "copy and paste" function.



6. Open the excel template, and input data to the relevant columns.



Column	Remark
Student Reference	Please use numbers or codes to avoid using real student names or application numbers. However, the teacher-in-charge should know the corresponding student of any record, so that the record can be verified if necessary.
Jcode	<u>JUPAS code</u> of the admitted course
4C+1X	The <u>grade point</u> will be calculated automatically, <u>please leave them blank</u> .
Best 5	For Mathematics, Compulsory Part and Extended Part are counted as one subject.
2C+3X	When candidates have results in both parts, the one with better result will be selected to input .
Band	Banding of programme choice
DSE Subjects	Grade of the subject. You can either enter “1, 2, 3, 4, 5, 5*, 5**” or “1, 2, 3, 4, 5, 6, 7”, where 6 = 5* and 7 = 5**.
Remarks	To deal with the case of submitting alternative qualification(s) in Chinese Language, please put a “#” in the CHI column, and type the details in the Remarks column. For example: GCSE Cantonese Grade A

ABV	Subject	ABV	Subject
PHY	Physics	VA	Visual Arts
CHEM	Chemistry	THS	Tourism and Hospitality Studies
BIO	Biology	ERS	Ethics and Religious Studies
SCI(INT)	Science: Integrated Science	MUSIC	Music
SCI(COM)	Science: Combined Science	PE	Physical Education
ICT	Information and Communication Technology	HMSC	Health Management and Social Care
CLIT	Chinese Literature	DAT	Design and Applied Technology
ELIT	Literature in English	TL	Technology and Living
CHIST	Chinese History	JAP	Japanese
HIST	History	GER	German
GEOG	Geography	OTH(CATC)	Other Category C subjects
ECON	Economics	APL	Applied learning subjects
BAFS	Business, Accounting and Financial Studies		

**** Use “M1/M2” ONLY when you are not sure whether the student was sitting for M1 or M2.**

7. After entering all the required data, select the cells filled with data, and then 'COPY' (or Ctrl C).

	A	B	C	D	E	F	G	H	I	J	K	L	M	N	O	P	Q
1	Student Ref. code (eg. J4C+1X)	Best 5	2C+3X	Band (A-E)	CHI	ENG	Math	LS	M1	M2	M1/M2	PHY	CHEM	BIO	SCI(INT)		
2	1_01 JS5003			A	4	4	5**	4		5		5*					
3	1_02 JS9220			E	4	3	5	4					3				
4	1_03 JS6767			C	5	5*		5	4	4							
5	1_04 JS6016				4	4	5*		4	5							
6	1_05 JS4401			A	5	4	4	4								4	
7	1_06 JS1041			B	3	5	3	4									
8	1_07			A	5*		4	5*	3		5		5	4			
9	1_08 JS3636			A		4	5*	5	4	4				5	5****		
10	1_09 JS8222			A	4	5	3	3	2					3		7	
11	1_10 JS3650			A	5*	4	5	5		4		5*		4			
12	1_11 JS4240			A	5*		4	5*									
13	1_12 JS4874			A	4	5	5	5*		5**							
14	1_13 JS3131			F	5	4	4	5		4			4	4			
15	1_14 JS1011				1												
16	1_15 JS1001			A	4	4	5	4		4			4				
17	1_16 JS3612			A	5	3	5*	5									

8. Back to the JUPAS STATISTICS 2014 platform, press Ctrl V to paste the data.

		Student Reference	Jcode (eg. JS1021)	4C+1X SORT	Best 5 SORT	2C+3X SORT	Band (A-E)	CHI	ENG	Math	LS	M1	M2	M1/M2	PHY	CHEM	BIO	SCI(INT)	SCI
DEL	*	1_01	JS5003	25	29	27	A	4	4	7	4		5		6				
DEL	*	1_02	JS9220	20	20	20	E	4	3	5	4				3				
DEL	*	1_03	JS6767	29	29	29	C	5	6	6	5	4	4						
DEL	*	1_04	JS6016	24	24	24		4	4	6	4	5							4
DEL	*	1_05	JS4401	21	21	21	A	5	4	4	4						4		
DEL	*	1_06	JS1041	20	20	20	B	3	5	3	4								3
DEL	*	1_07		24	25	25	A	6	4	6	3		5		5	4			
DEL	*	1_08	JS3636	24	NaN	NaN	A	4	6	5	4	4				5	5****		


9. Scroll down to the bottom of the screen to see if there is any WARNING message. If yes, please check and amend immediately.

		Student Reference	Jcode (eg. JS1021)	4C+1X SORT	Best 5 SORT	2C+3X SORT	Band (A-E)	CHI	ENG	Math	LS	M1	M2	M1/M2	PHY	CHEM	BIO	SCI(INT)	SCI
DEL	*	1_12	JS4874	27	27.5	27	A	4	5	5	6		7						4.5
DEL	*	1_13	JS3131	22	22	22	F	5	4	4	5		4		4	4			
DEL	*	1_14	JS10111	5	9	9	1												
DEL	*	1_15	JS1001	21	21	21	A	4	4	5	4		4		4				
DEL	*	1_16	JS3612	19	19	19	A	5	3	6	5								

0 record(s) loaded.

ROW 14: WARNING: Jcode not exist: JS10111

10. **Check carefully** whether the data are correct. Finally, press 'SAVE'. Time is required for system checking, **especially when you have a large amount of data entry**. Please wait patiently for the next page.

 JUPAS STATISTICS 2013

JUPAS STATISTICS DATA ENTRY LOGOUT Member: 126513

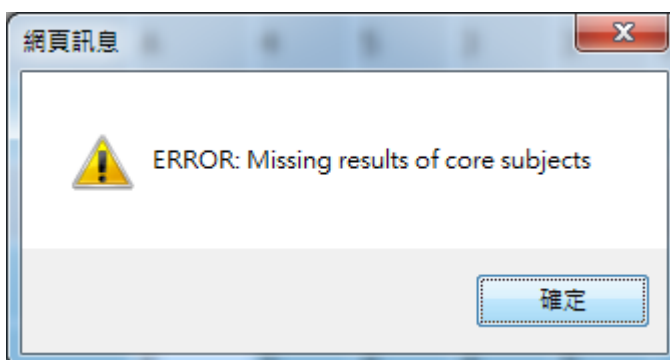
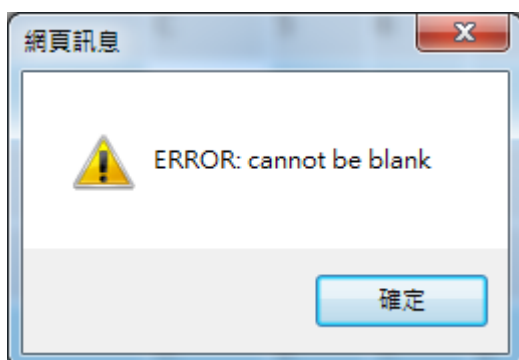
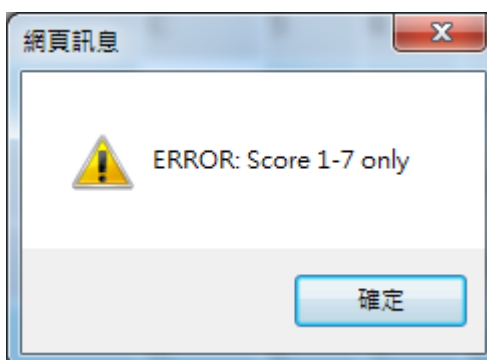
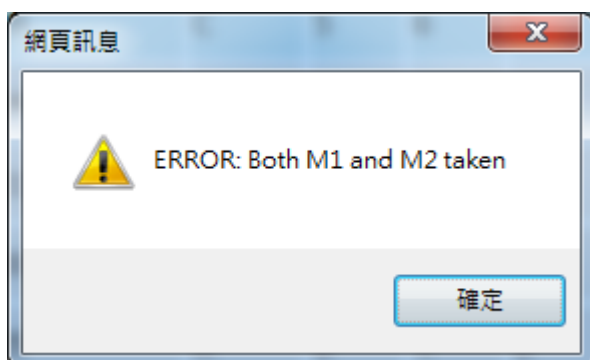
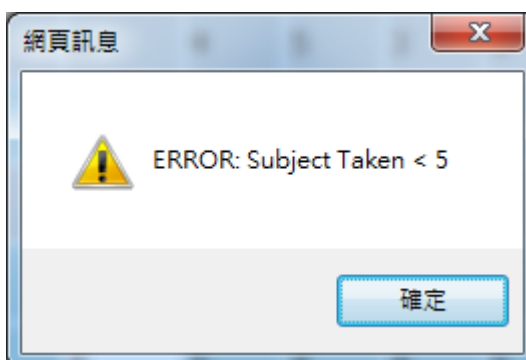
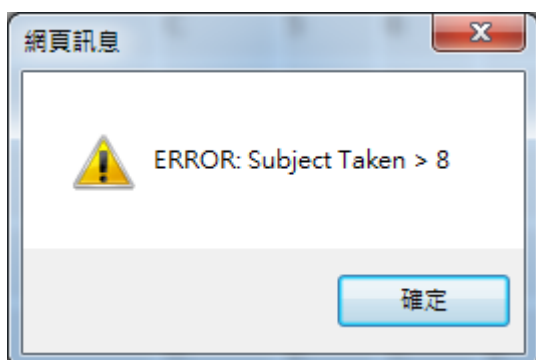
NOTE: You can copy Excel data and paste it in this sheet (please wait for few minutes for large amount of data) [DOWNLOAD EXCEL TEMPLATE](#)

Score 1-7 : 5*(6), 5*(7)

SAVE CANCEL

DEL ALL	Student Reference	Code (eg.JS1021)	4C+1X SORT	Best 5 SORT	2C+3X SORT	Band (A-E)	CHI	ENG	Math	LS	M1	M2	M1/M2	PHY	CHEM	BIO	SCI(INT)	SCI
DEL	* 1_01	JS5003	25	29	27	A	4	4	7	4		5		6				
DEL	* 1_02	JS9220	20	20	20	E	4	3	5	4				3				
DEL	* 1_03	JS6767	29	29	29	C	5	6	6	5	4	4						
DEL	* 1_04	JS6016	24	24	24		4	4	6	4	5						4	
DEL	* 1_05	JS4401	21	21	21	A	5	4	4	4					4			
DEL	* 1_06	JS1041	20	20	20	B	3	5	3	4							3	
DEL	* 1_07		24	25	25	A	6	4	6	3		5		5	4			
DEL	* 1_08	JS3636	24	NaN	NaN	A	4	6	5	4	4				5	5****		

11. A message box will **pop up** when there is something wrong in the data. Here are some of the examples:



14. If you would like to check your record again, choose your member ID from the pull-down-menu.

JUPAS STATISTICS 2013

JUPAS STATISTICS DATA ENTRY LOGOUT Member: 126513

NOTE: You can copy Excel data and paste it in this sheet (please wait for few minutes for large amount of data) DOWNLOAD EXCEL TEMPLATE

SAVE CANCEL

Score 1-7 : 5*(6), 5*(7)

Member ID	Code (e.g. JS1021)	4C+1X SORT	Best 5 SORT	2C+3X SORT	Band (A-E)	CHI	ENG	Math	LS	M1	M2	M1/M2	PHY	CHEM	BIO	SCI(INT)	SCI(O)
126513																	
JUPAS Program Code																	
JS1001																	
JS1011																	
JS1041																	
JS3131																	
JS3612																	
JS3636																	
JS3650																	
JS4240																	
JS4401																	
JS4874																	
JS5003																	
JS6016																	
JS6767																	
JS8222																	
JS9220																	

Copyright © 2013

You can also amend the data and save it if necessary.

15. Congratulations! The data entry process is finished successfully. An auto-reply email will be sent to the email address of the teacher-in-charge. Please remember to logout. Thank you very much.

©HKACMGM, 4/9/2014